

Sorting guide



Contents

- 3 Food waste
- 4 Residual waste
- 5 Soft/rigid plastic
- 6 Food and beverage cartons
- 7 Metal
- 8 Glass
- 9 Paper and small cardboard items
- 10 Bulky waste
- 11 Hazardous waste
- 13 How to use the environmental box
- 14 What do I do if ...
- 15 What happens to the waste?
- 16 Access road and bin location
- 17 Recycling centres
- 17 Self service
- 18 Need help?

Fun facts about recycling



51 %

That's how much household waste was recycled in Faxe Municipality in 2021.
In 2017, it was only 30%.

Recycling metal makes good sense. That's because CO₂ consumption is



11 TIMES AS HIGH when you produce a tin from new metal as opposed to recycled metal.



When glass is recycled and replaces the production of new glass, CO₂ emissions are reduced by
400 KG CO₂ PER TONNE OF GLASS.

For every **1 KG OF PLASTIC WASTE**, we save energy equivalent to an average household's standby consumption of all electrical appliances for 14 days.



60 %

The amount of household waste Faxe Municipality wants to recycle by 2030.





Food waste



Remember to use the bag

Food waste must be placed in the bag provided for food waste. Tie a bag on the handle of the container when you want the bin man to leave new bags for you.

Yes please

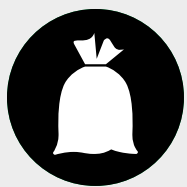
- ✓ Cut flowers
- ✓ All leftover food
- ✓ Bread, rice and pasta
- ✓ Fat, sauce and cooking and frying oil
- ✓ Fish and shellfish
- ✓ Fruit and vegetables
- ✓ Coffee filters and paper tea bags (with contents)
- ✓ Meat and bones
- ✓ Fallen fruit (small amounts)
- ✓ Cheese
- ✓ Yogurt, milk, skyr and ymer
- ✓ Eggshells

No thanks

- × Cigarette butts, snuff and chewing gum
Residual waste
- × Packaging from food
Plastic or residual waste
- × Cat litter and bags of dog waste
Residual waste
- × Potted plants and garden waste
Recycling centre
- × Napkins
Residual waste

Avoid maggots

- 1 Avoid overfilling the bag - and remember to tie in a knot!
- 2 Squeeze the air out of the bag before tying the knot.
- 3 Carefully place the bag in the container so that the bag doesn't break.



Residual waste

...and then there's the rest

Residual waste is what is left after you have sorted everything for recycling, hazardous waste and electronics.



Yes please

- ✓ Ashes (cooled and wrapped)
- ✓ Cigarette butts, snuff and chewing gum
- ✓ Animal manure and litter from smaller animals (smaller quantities)
- ✓ Packaging, which is very dirty
- ✓ Disposable gloves and cloths
- ✓ Hygiene waste, e.g. bandages, nappies, sanitary towels and cotton buds
- ✓ Pizza boxes
- ✓ Dirty or wet paper, cardboard or plastic
- ✓ Vacuum cleaner bags (in sealed bag)

No thanks

- × Waste that can be recycled
- × Batteries
On the lid of the container, environmental box or Recycling centre
- × Electronics
Environmental box or Recycling centre
- × Light bulbs
Environmental box or Recycling centre
- × Hazardous waste and chemicals
Environmental box or Recycling centre
- × Polystyrene
Bulky waste or Recycling centre
- × Residual medications
Pharmacy

Always deliver residual waste in a bag

Be careful to wrap up dusty and unhygienic waste.



Soft/rigid plastic



Plastic and food & beverage cartons in the same compartment

Plastic and food and beverage cartons are separated again at the sorting plant and sent for recycling separately.



Yes please

- ✓ Plastic packaging, e.g. from food
- ✓ Plastic foil and bubble wrap
- ✓ Plastic toys (without electronic parts)
- ✓ Plastic lids, tubs, bottles, bags and buckets
- ✓ Empty plastic packaging, e.g. from shampoo and detergent with this label



Squeeze the plastic tightly together. It leaves more room for more waste in the container.

Nej tak

- × Packaging from chemicals with these hazard labels



Environmental box or Recycling centre

- × Flamingo
Bulky waste or the Recycling centre
- × Rubber boots, rainwear, paddling pools and garden hoses
Recycling centre
- × Plastic wrappers e.g. sweets and crisp bags
Residual waste
- × Tupperware bowls and other melamine
Recycling centre or residual waste
- × Plastic with electronics
Bulky waste or Recycling centre
- × Bags with metal inside, e.g. from crisps, coffee and frozen food
Residual waste



Food and beverage cartons



Empty the packaging

Remove the lid, scrape and empty plastic packaging and food & beverage cartons. You do not need to use soap and water.

Yes please

- ✓ Beverage cartons, e.g. from milk, juice, cocoa and squash
- ✓ Food cartons, e.g. from chopped tomatoes, soups, chickpeas and home-freeze ice
- ✓ Soda cups and to-go cups without lids, e.g. from takeaways
- ✓ Yogurt and thick dairy product cartons

No thanks

- × Food packaging bags made from several materials e.g. coffee or crisps
Residual waste
- × Paper cutlery and plastic-coated cardboard
Residual waste
- × Pizza boxes
Residual waste

Fold food & beverage cartons

Food & beverage cartons take up a lot of space. Fold them tightly and squeeze the air out so that they take up less space before placing them in the container. Always remember to empty the carton before putting it in the container.



Metal

Small metal objects only

Only put smaller pieces of scrap metal in the container as larger items may get stuck.



Yes please

- ✓ Aluminium trays
- ✓ Pots and pans
- ✓ Bottle tops
- ✓ Tins
- ✓ Metal lids
- ✓ Tin foil
- ✓ Beer and soda cans without deposit

No thanks

- × Gas and pressure bottles
Recycling centre
- × Medicinal packaging (e.g. empty blister packs)
Residual waste
- × Metal packaging from paints/chemicals
Environmental box or Recycling centre
- × Metal with electronics
Environmental box or Recycling centre
- × Spray cans
Environmental box or Recycling centre
- × Large electronics
Bulky waste or Recycling centre

Empty of content

Packaging from food must be emptied or scraped free of contents. You do not need to rinse. To avoid maggots and unpleasant odours, give the metal a quick rinse.



Glass

Avoid ceramics, porcelain and ovenproof glass

Ceramics, porcelain, stoneware and ovenproof glass must be handed in at the Recycling centre. Even small amounts can contaminate the sorting, making it difficult to recycle.

Yes please

- ✓ Drinking glasses (not crystal)
- ✓ Glass packaging
- ✓ Glass bottles
- ✓ Jam jars
- ✓ Wine bottles

No thanks

- × Light bulbs, fluorescent tubes and other light sources
Environmental box or Recycling centre
- × Shards of glass from windows
Recycling centre
- × Tempered glass, e.g. ovenproof glass dishes
Recycling centre
- × Ceramics, stoneware and porcelain
Bulky waste or Recycling centre
- × Clay jars and stoneware
Bulky waste or Recycling centre
- × Mirrors
Recycling centre

Empty of content

Glass packaging must be emptied of contents and be without a lid. Plastic and metal lids can be sorted as plastic or metal. You do not need to rinse and clean the glass.



Paper and small cardboard items



Only clean and dry paper and small cardboard items

Paper and cardboard must be clean and dry, as dirty or wet material can ruin recycling. So for example, a pizza box should always go in the residual waste.



Yes please

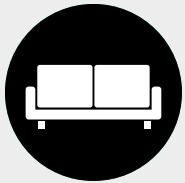
- ✓ Newspapers and flyers
- ✓ Corrugated cardboard
- ✓ Cardboard, e.g. from toothpaste and breakfast products
- ✓ Office and printer paper
- ✓ Envelopes with and without windows
- ✓ Magazines and comics
- ✓ Cardboard tubes from kitchen and toilet rolls
- ✓ Shoeboxes without contents
- ✓ Egg boxes

No thanks

- × Books
Recycling centre
- × Polystyrene
Bulk waste or Recycling centre
- × Gift wrap and ribbon
Residual waste
- × Milk and juice cartons
Food & beverage cartons
- × Paper cups and plates
Residual waste
- × Pizza boxes
Residual waste
- × Bags from flour and grains
Residual waste
- × Wet and/or dirty paper
Residual waste

Only cardboard the size of A4 paper

Fold the cardboard together so that it takes up less space and does not get stuck during emptying. Larger pieces of cardboard can be handed in as bulky waste at the recycling centre.



Bulky waste

Where to put bulky waste

You must place any bulky waste on your own plot - as close to the boundary towards the road as possible. It must not be placed so that it blocks pedestrians on the pavement.

See also rules for the placement of bulky waste in the Regulations for household waste.



Yes please

- ✓ Polystyrene
- ✓ Appliances, such as stoves, refrigerators and washing machines
- ✓ Iron and metal, e.g. bicycle frames, pots, pans and metal packaging
- ✓ Ceramics and porcelain
- ✓ Furniture, e.g. garden furniture and sofas
- ✓ Pallets
- ✓ Plastic foils (must be placed in a clear bag)
- ✓ Large electronics, such as televisions, computers and electronic toys
- ✓ Large cardboard (must be bundled and tied with string)
- ✓ Carpets/rugs
- ✓ Ripped fabrics

No thanks

- × Construction waste, e.g. doors, windows, impregnated wood and roofing sheets
Recycling centre
- × PVC, e.g. inflatables, gutters and rubber boots
Recycling centre
- × Sanitation, e.g. toilets, cisterns and sinks
Recycling centre
- × Small combustible items, e.g. ring binders without content, non-woven fabric, fiberglass and CDs/DVDs without cover
Recycling centre

Max. 8 units

You can leave out a maximum of 8 units per collection. One unit corresponds to e.g. one item of furniture, one sack or one bundle of cardboard.



Hazardous waste



How to dispose of hazardous waste

Use the environmental box for hazardous waste. It can also be handed in at the Recycling centre. Batteries can be placed both in the environmental box and on the lid of one of the large waste containers.

The environmental box incl. contents must only weigh a maximum of 4 kg

Yes please

- ✓ Waste with these hazard labels



- ✓ Low-energy bulbs and mercury-containing waste
- ✓ Lighters
- ✓ Paints, inks, adhesives and resins
- ✓ Nail polish and nail polish remover
- ✓ Oil, grease and petrol products
- ✓ Pesticides
- ✓ Small electronics, e.g. bicycle lights
- ✓ Spray cans, e.g. hairspray
- ✓ Turpentine and acetone
- ✓ Detergents

No thanks

- × Waste with these hazard labels



Recycling centre

- × Fireworks and gunpowder
Recycling centre

- × Shards of glass
Recycling centre

- × Knives and sharp objects
Recycling centre

- × Residual medication, needles, etc.

Pharmacy

- × Pressure bottles, e.g. gas cartridges for barbecues
Recycling centre

- × Weapons and ammunition
Police

NOTE!

All hazardous waste must be delivered in sealed packaging.

Collection

You can order a collection of your environmental box and bulky waste every 4 weeks. Put it out the day before or by 05.00 at the latest on the day of collection.



How to order environmental box and bulky waste collections

- 1 Go to "My Waste" on faxeforsyning.dk.
- 2 Enter your address.
- 3 Select "Order collection of bulky waste/ hazardous waste - environmental box", and press "Order".
- 4 Choose waste sorting.
- 5 Click on the next available date.
- 6 Tick the types of waste you would like collected.
- 7 Enter your contact information.
- 8 Confirm that your details are correct.

Remember that it is hazardous waste

The hazardous waste must always be upright in the environmental box. You are responsible for ensuring that the hazardous waste is sorted correctly.

A hand is shown placing a pink spray bottle into a red environmental box. The box is lined with a red plastic bag and contains other items like a yellow container and a red bottle. The background is a blurred indoor setting.

How to use **the environmental box**

- ✓ The box can only weigh a maximum of 4 kg - including the box.
- ✓ The waste should preferably be in its original packaging.
- ✓ If you do not have the original packaging, put on a sticker that clearly states what type of waste it is.
- ✓ Put light bulbs in a clear bag of max. 4 litres - remember to knot the bag.
- ✓ Screw lids onto bottles, cans and buckets, and place them upright in the box.
- ✓ The lid of the environmental box must be completely closed.

Pack the environmental box securely

Pack your environmental box with consideration for the bin man. After collection, the waste is sorted by hand and sent on for treatment at approved facilities.

What do I do if ...



“

My waste container is dirty?

You are responsible for cleaning the containers if they become dirty. All you need is soap and water. Get more cleaning tips on our website.

“

I need more space for my waste?

If you have a permanent need for more space for food and residual waste, you can order an extra container. The price depends on the size of the container. See the prices in our price list on the website.

“

I have extra residual waste for a short period of time?

If you occasionally need to get rid of extra residual waste, you have three options. You can buy an extra bag, a collection card or request an extra collection. Read more on our website.

“

My waste hasn't been collected?

If your waste has not been collected as planned, you can report it via "My Waste" on our website or by contacting us on tel.: 70 26 02 07 or email: post@faxeforsyning.dk.

“

I need green bags for food waste?

Tie one of the last green bags on the handle of your container for food and residual waste, and the bin man will leave new bags for you at the next collection.

You can also pick up new bags at Faxeforsyning at Jens Chr. Skous Vej 1 in Haslev.

What happens to the waste?



Metal

Metal is sorted by type and sold for recycling. The metal is melted down so that it can be used for e.g. new tins or bicycles. Labels on the outside and plastic on the inside of the tins will disappear in the process.



Food waste

Once you have sorted your food waste, we collect it and drive it to Affald-Plus. Here, bags and other impurities are removed. The food waste is then converted into a liquid mass (pulp), which is composted. After a few weeks, your food waste is converted into biogas and fertilizer.



Glass

Glass packaging, shards and bottles are sorted by colour and sent to a glass-works, which melts it down into new bottles and glasses. Glass can be recycled over and over again.



Plastic and food and beverage cartons

Plastic and food & beverage cartons are pressed into large bales and sent to a plant where it is sorted by type. Plastic is melted down into granules (small balls), which can be resold as raw material and included in new products. Plastic is made from oil, and we therefore save oil when we recycle the plastic.



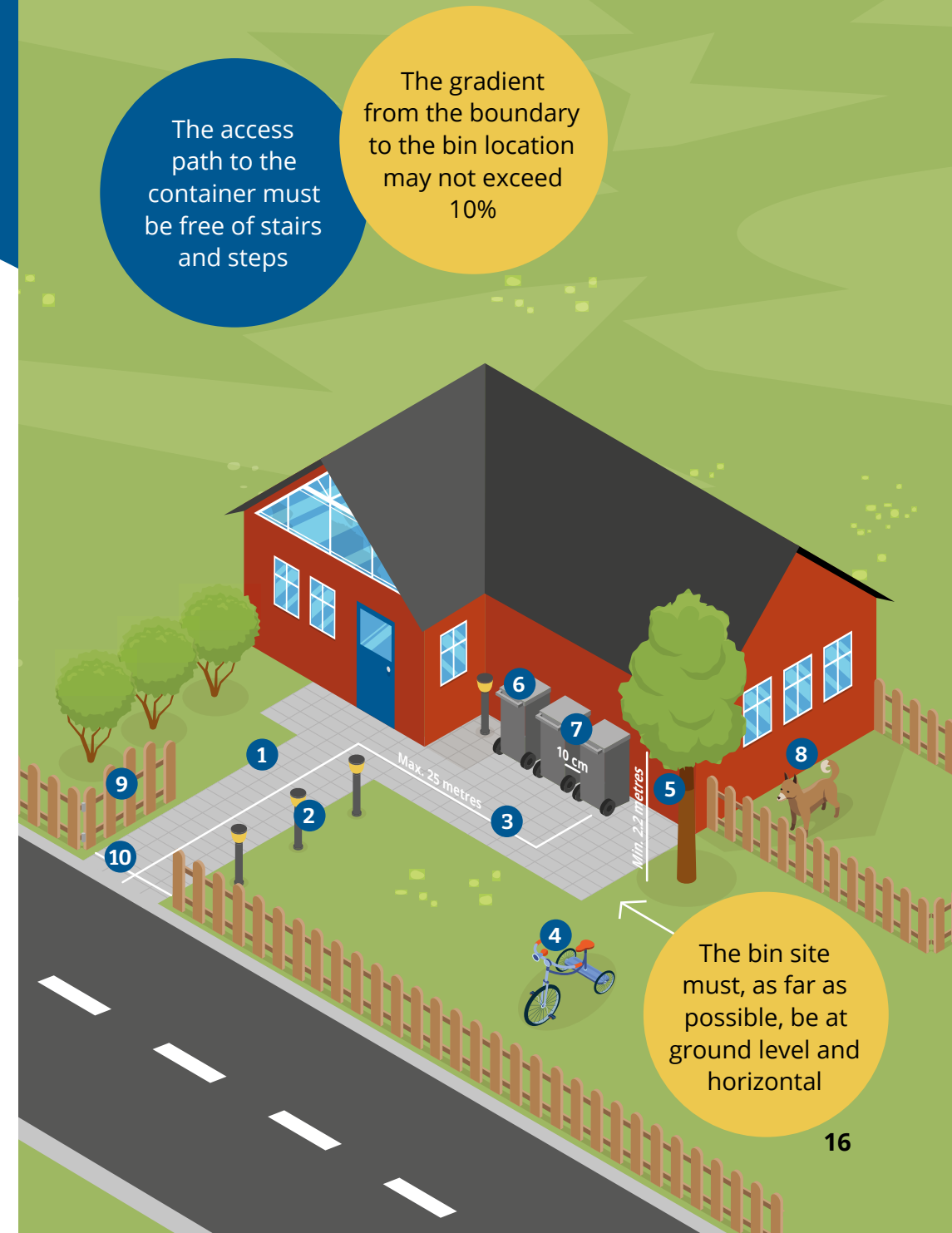
Paper and small cardboard items

Paper and small cardboard items are sent to a factory, where it is dissolved in water. The mass is converted into new paper or cardboard, e.g. egg boxes, toilet paper or newspapers.

It takes far less water and energy to recycle the materials than to make new paper and cardboard.

Access road and bin location

- 1 The surface must be solid - either tile, concrete or asphalt
- 2 The area around the bin location and access road must be well-lit during the darker months
- 3 The containers must be placed no more than 25 metres from the boundary
- 4 The access road must be free of bicycles, prams and the like
- 5 The clearance around the access road and by the containers must be a minimum of 2.2 metres
- 6 The containers must be placed with the handle facing outwards so that the bin man can take them without having to turn them
- 7 There must be a minimum of 10 cm between the containers
- 8 There may not be any stray dogs on the property when the waste is collected. The dog must not be a nuisance to the bin man
- 9 Your garden gate must be able to stay open by itself
- 10 The access road must be wide enough for the bin man to pass through it with a container without any problems



Recycling centres



Garden waste site in Faxe
Præstøvej 105A, Tystrup,
4640 Faxe
(Open 24 hours)

Garden waste site in Karise
Dalbyvej 6,
4653 Karise
(Open 24 hours)

Haslev Recycling centre
Norgesgade 2B,
4690 Haslev

Garden waste site in Haslev
Norgesgade 6-8,
4690 Haslev
(Open 24 hours)

Rønnede Recycling Centre
Industrivej 22,
4683 Rønnede

**Garden waste site
in Rønnede**
Industrivej 22,
4683 Rønnede



Read more at
www.faxeforsyning.dk

Self service

Go to "My Waste" on Faxe Forsyning's website.

Here you can:

- Report missed collections
- Get an overview of when we empty your containers
- Order new or extra containers
- Order collections of bulky waste and hazardous waste
- Get an overview of the waste sorting at your address
- Sign up for our SMS text and email service for notifications before we collect your waste

Need help?

Contact us by phone and email:

Monday - Thursday: 09.00-14.30

Friday: 09.00-13.00

Contact

Telephone: 70 26 02 07

Mail: post@faxeforsyning.dk

Faxe Forsyning

Jens Chr. Skous Vej 1

4690 Haslev



You can find Faxe Forsyning
on Facebook and
www.faxeforsyning.dk

